

NOVEMBER 14, 2022

# HHS Patient Safety Convening

**Debra Houry, MD, MPH**

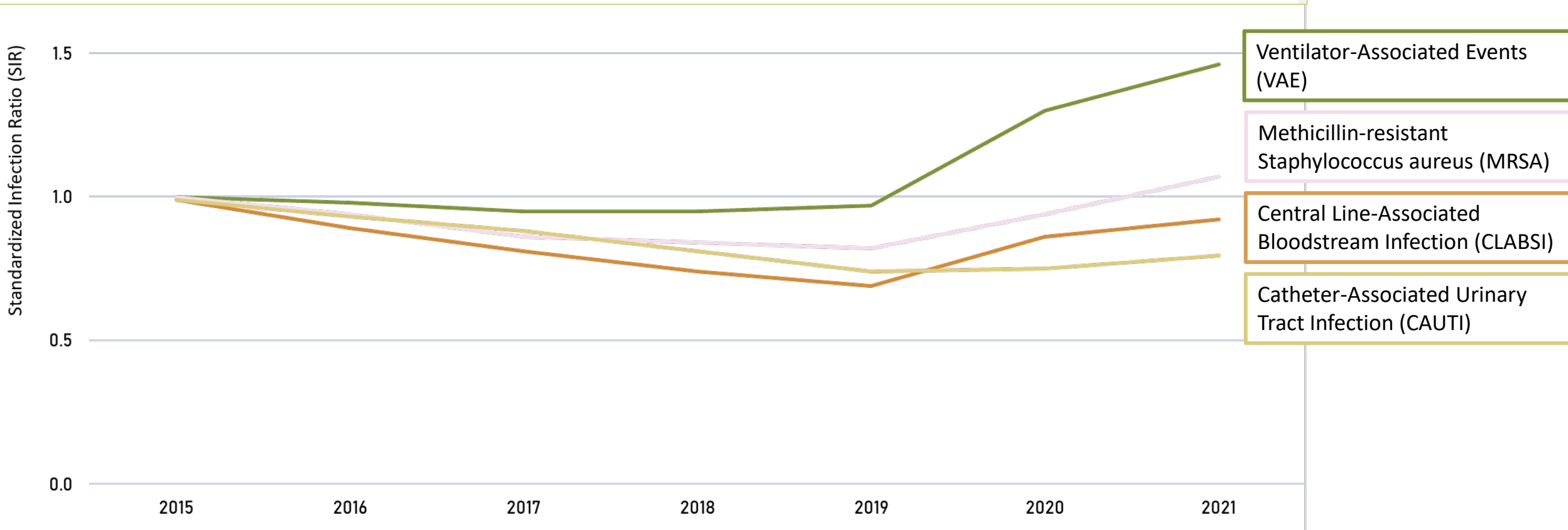
Acting Principal Deputy Director, Centers for Disease Control and Prevention



**CDC24/7**

# National Standardized Infection Ratio (SIR), 2015 - 2021

National CLABSI, CAUTI, VAE, MRSA LabID SIRs

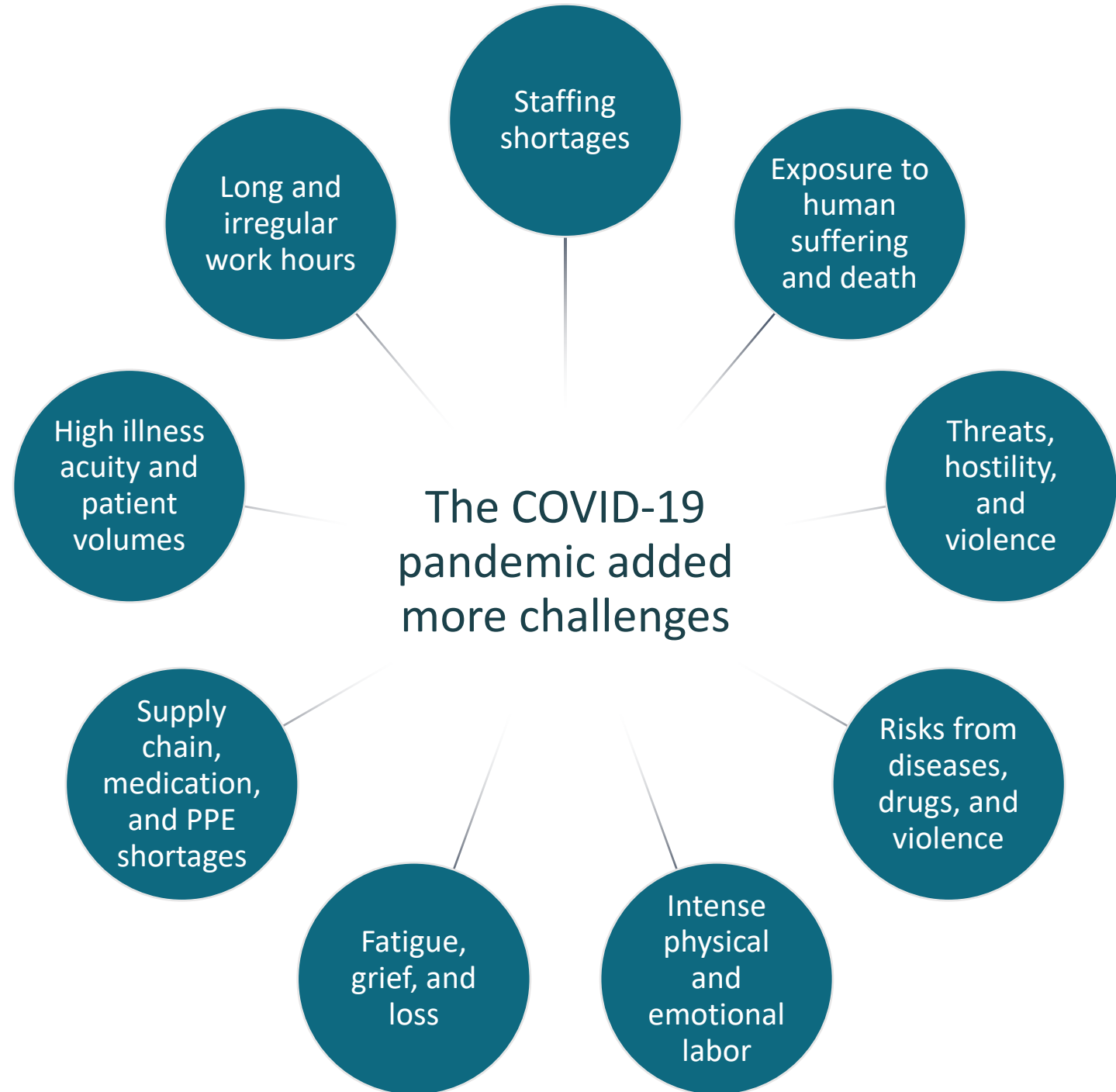




**249%**

increase in the  
injury and illness  
rate among  
health workers  
from 2019-2020.

Source: Bureau of Labor Statistics, Employer-Reported Workplace Injuries and Illnesses – 2020



# ADVANCING SCIENCE + HEALTH EQUITY

## ONE VISION

Equitably protecting  
health, safety, &  
security

## CDC Moving Forward

- Share Scientific Findings and Data Faster
- Translate Science into Practical, Easy to Understand Policy
- Prioritize Public Health Communications
- Promote Results-Based Partnerships
- Develop a Workforce Prepared for Future Emergencies

# Partnering to Protect Patients and Healthcare Personnel

**Providing direct support** to facilities through state and local partners

**Ensuring healthcare personnel are trained** to protect themselves and their patients from infectious threats

**Advancing the impact of safety measures** while reducing reporting burden

**Developing innovative implementation tools and resources** to address key harms

**Share best practices for integrating worker safety and health** into patient safety discussions

**Identify practices** for organizational-level actions and systems-level change



# Thank you.



**Centers for Disease  
Control and Prevention**  
Office of the Director

The findings and conclusions in this report are those of the authors and do not necessarily represent the official position of the Centers for Disease Control and Prevention.