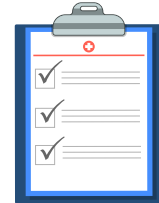
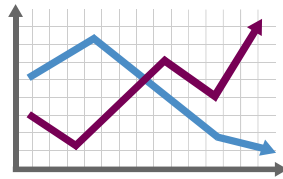
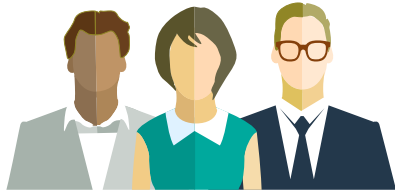


# AHRQ's EvidenceNOW: Helping Small Primary Care Practices Build Capacity for Quality Improvement

One of the main goals of EvidenceNOW is increasing the **capacity** of primary care practices to implement evidence into practice. We define capacity as the attitudes, skills, structures, and processes that enable a primary care practice to improve systematically. For example, practices with capacity for quality improvement are eager to learn from mistakes, create and train high-functioning teams, and integrate improvements into their work.

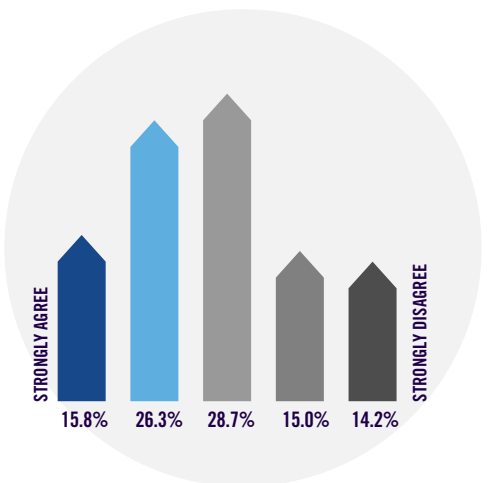
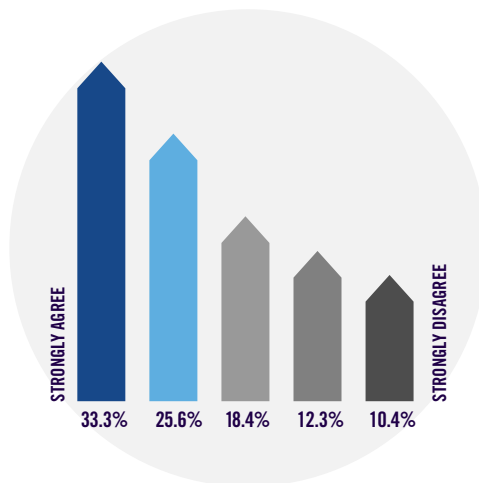
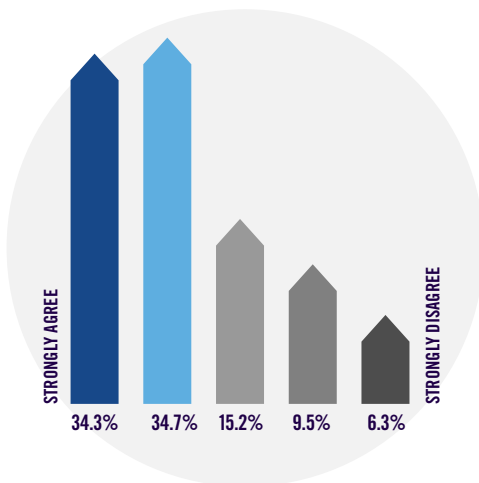
At baseline, most EvidenceNOW practices already had some capacity to implement new evidence into practice but had room for growth.



**69%** Over two thirds of practices already use teams to focus on quality improvement

**59%** But, fewer practices were setting goals and then tracking and comparing their performance over time

**42%** And, less than half of practices were quickly testing small changes before bringing them to scale



"Our practice uses teams for quality improvement"

"Our practice sets goals and tracks performance on heart disease prevention measures at least yearly"

"Our practice quickly pilots changes in care before implementing them across our organization"

EvidenceNOW is providing customized support to primary care practices to help them improve the delivery of the ABCS of heart health and increase their capacity for quality improvement. Local and national evaluations will explore whether EvidenceNOW was able to achieve both goals.

For more information about EvidenceNOW, visit: [www.ahrq.gov/EvidenceNOW](http://www.ahrq.gov/EvidenceNOW)

These preliminary data are provided for illustrative purposes and are subject to change based on final data analyses. Data courtesy of ESCALATES, the EvidenceNOW independent national evaluator under AHRQ grant number R01HS023940-01. For more information about the national evaluation, visit: [www.escalates.org](http://www.escalates.org)



**EvidenceNOW**  
Advancing Heart Health in Primary Care



AHRQ Pub. No. 18-RG0003-1-EF  
January 2018  
[www.ahrq.gov/EvidenceNOW](http://www.ahrq.gov/EvidenceNOW)