

AHRQ Step Up App Challenge

Advancing Care Through Patient Self-Assessments

Phase 1 Informational Webinar

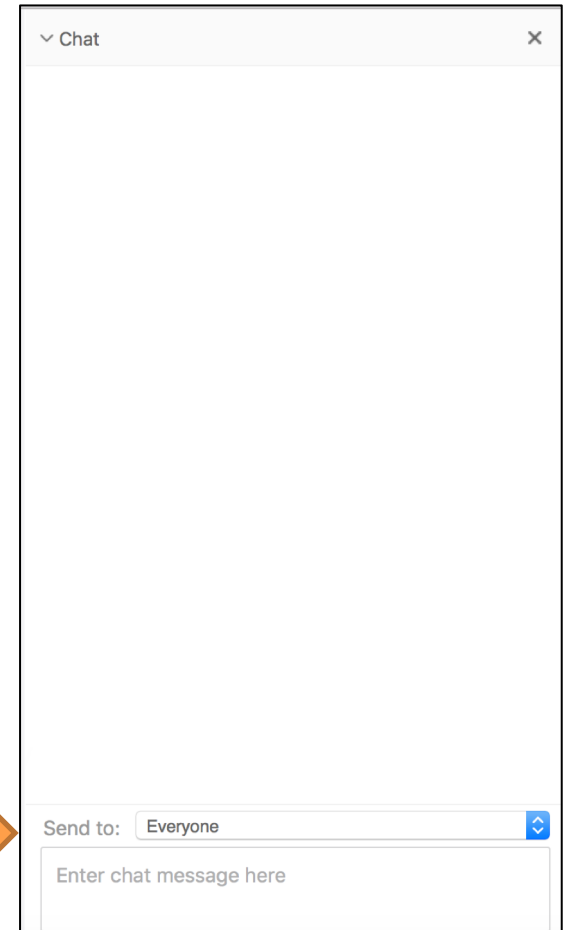
Learn about the challenge and how to enter Phase 1

For more information, visit:
www.ahrq.gov/stepupappchallenge

How to Submit a Question



- At any time during the presentation, type your question into the “Chat” section of your WebEx Chat panel.
- Please address your questions to “Step Up App Challenge (Host)” in the drop-down menu.
- Select “Send” to submit your question to the moderator.
- Questions will be read aloud by the moderator.

A screenshot of a WebEx chat panel. The panel has a title bar with a dropdown arrow and the text "Chat", and a close button (X) on the right. The main area is a large white rectangle for messages. At the bottom, there is a "Send to:" dropdown menu currently set to "Everyone", and a text input field with the placeholder "Enter chat message here".

▼ Chat X

Send to: Everyone

Enter chat message here

AHRQ Step Up App Challenge Team



Bryan Kim
Health Scientist/COR
AHRQ



Janey Hsiao
Health Scientist Administrator
AHRQ



Adrienne Peschard
Challenge Operations Lead
Sensis



Oliver Gerland
Challenge Strategist
Sensis

Agenda

- Overview of AHRQ
- What are Patient Reported Outcomes (PROs)?
- Understanding the Problem
- Overall Challenge Goal
- Understanding the PROMIS API
- Step Up App Challenge Overview
 - Phase Overview
 - Submission Requirements
 - Phase 1 Evaluation Criteria
- Timeline
- How to Enter
- Q&A

Agency for Healthcare Research and Quality (AHRQ)

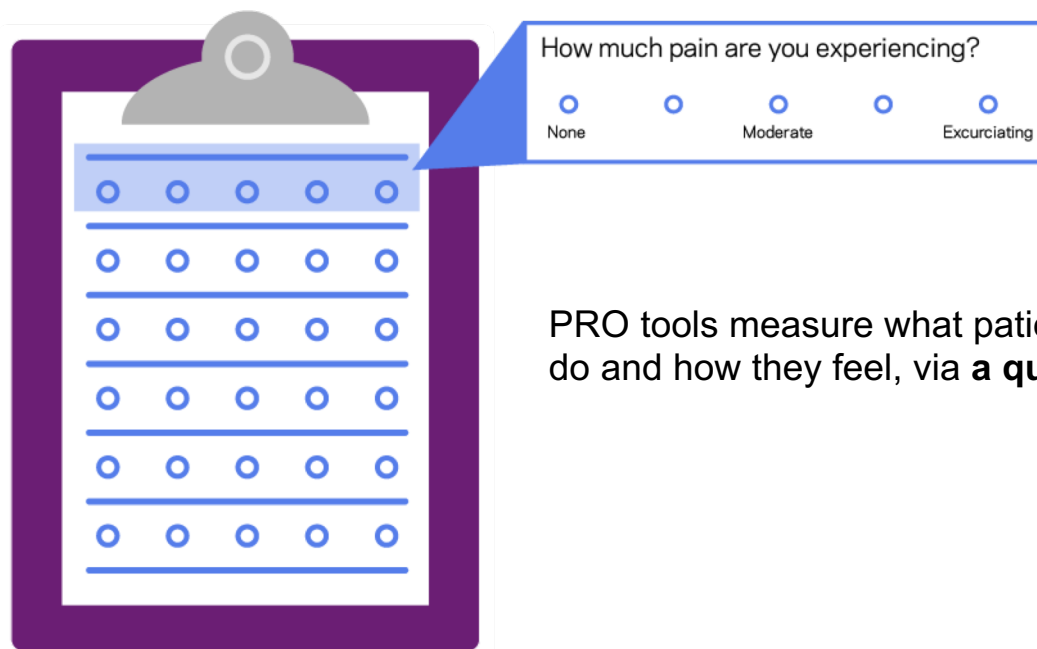
The Agency for Healthcare Research and Quality (AHRQ) builds bridges between research and practice to achieve the following goals:

1. Keep patients safe
2. Help doctors and nurses improve quality
3. Develop data to track changes in the healthcare system



AHRQ's mission is to produce evidence to make health care safer, higher quality, more accessible, equitable, and affordable, and to work within the U.S. Department of Health and Human Services (HHS) and with other partners to make sure that the evidence is understood and used.

What are Patient Reported Outcomes (PROs)?



The illustration shows a purple clipboard with a silver clip at the top. On the clipboard is a white sheet of paper with a questionnaire. The questionnaire has a header row with five blue circles, followed by seven rows of five blue circles each. A blue callout box points to the first row of circles. Inside the callout box, the text reads: "How much pain are you experiencing?". Below this text are five blue circles. Under the first circle is the word "None", under the third circle is "Moderate", and under the fifth circle is "Excruciating".

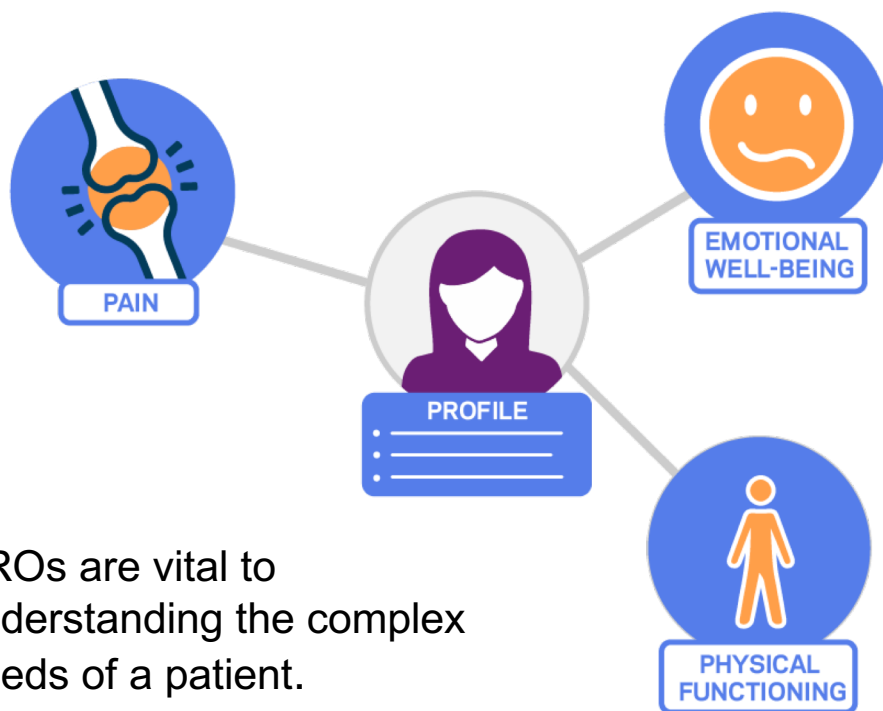
PRO tools measure what patients are able to do and how they feel, via a **questionnaire**.

Patient-Reported Outcomes (PROs) are **“any report of the status of a patient’s health condition that comes directly from the patient, without interpretation of the patient’s response by a clinician or other medical expert.”**

The Stakeholders



Why PROs Matter



PROs are vital to understanding the complex needs of a patient.

The patient's perspective on domains across conditions complement clinical assessments to provide a holistic view of the care received.

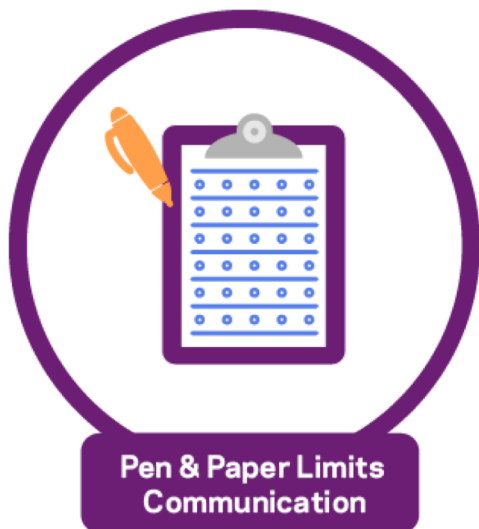
PROs are important for:

- multiple chronic conditions
- older adults
- people with disabilities

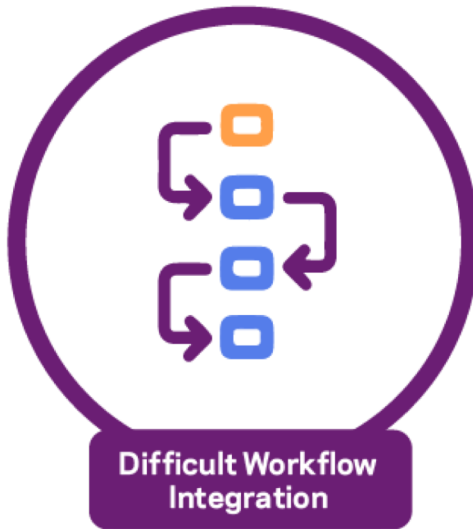
PROs can reflect outcomes of care for multiple conditions, treated by multiple providers, across multiple settings of care.

The Problem to Solve

Patients, researchers, and providers are burdened with the current state of PRO data collection



Most PRO data are collected via pen and paper, making it difficult for patients and researchers to access and leverage.



Some digital tools exist, but these tools are not widely adopted due to problems related to workflow integration and a lack of data standards.



Challenge Goal



Challenge Goal:

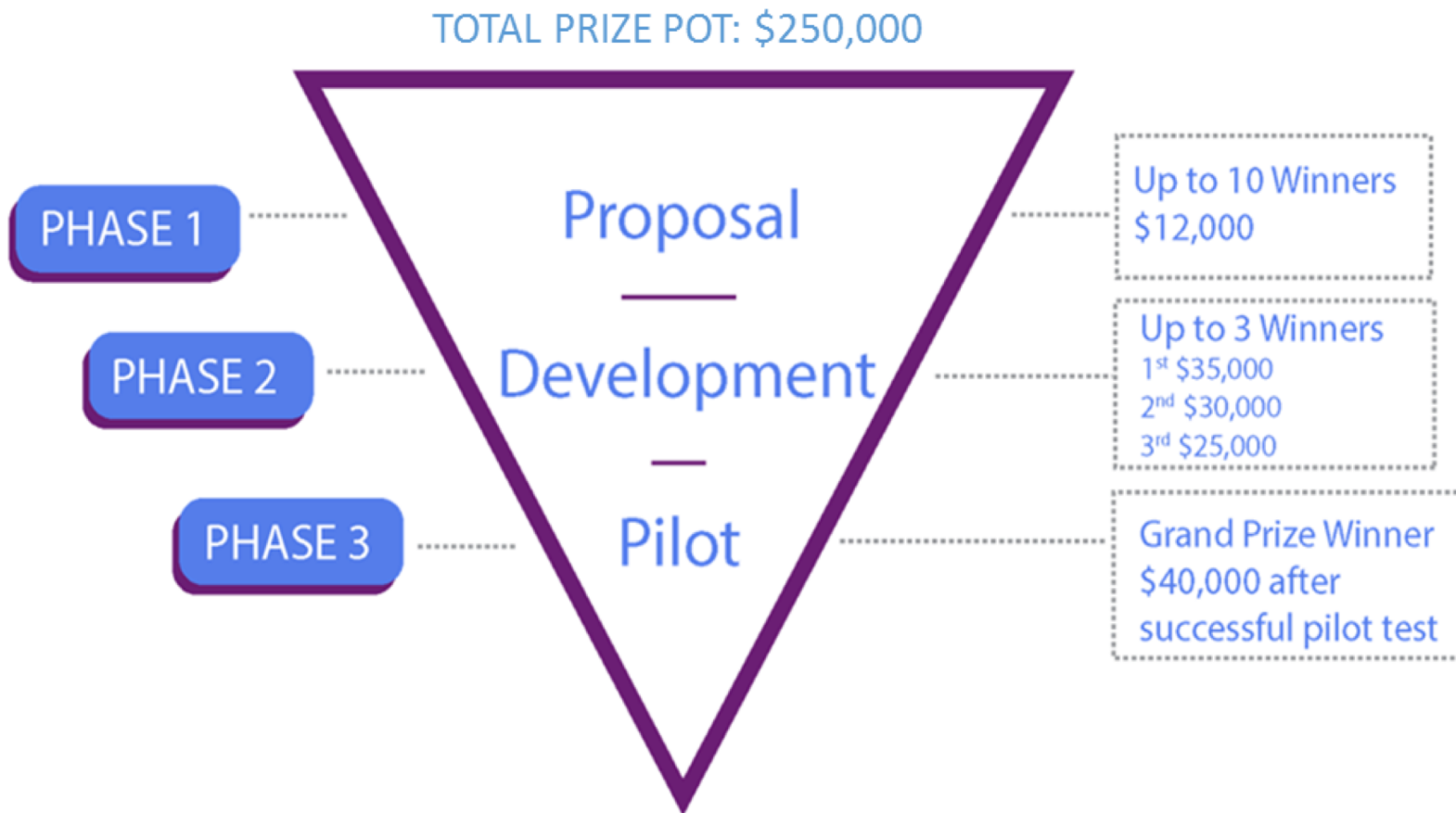
To design, develop, and pilot user-friendly digital tools that efficiently collect, aggregate, and share patient-reported outcome data.

PROMIS Measures

PROMIS® (Patient-Reported Outcomes Measurement Information System) is a set of person-centered measures that evaluates and monitors physical, mental, and social health in adults and children. It can be used with the general population and with individuals living with chronic conditions.

- There are two administration options for assessing physical function using PROMIS®: short forms and **computer adaptive testing (CAT)**
- When administering a short form, participants are instructed to answer all of the items (i.e., questions or statements) presented
- With CAT, **participant responses guide the system's choice** of subsequent items from the full item bank
- Participants can use the [Assessment Center Application Programming Interface](#) (API) to build an application that enables CAT
- In addition to CAT, participants are highly encouraged to also include the capability to administer the selected PROMIS® short form v1.0 – Physical Function 10a (offline administration)

Challenge Overview



Phase Overview



Phase 1

Proposal

Participants will submit a five-page business case and pitch deck demonstrating their app idea.



Phase 2

Development

Participants will develop and present an app capable of collecting standardized PRO data in various ambulatory care settings, including primary and specialty care.



Phase 3

Pilot

The grand prize winner in Phase 2 will collaborate with a contractor to pilot-test the app in nine practice settings affiliated with MedStar Health in the DMV area.

General Requirements

In order for a submission to be eligible to win this Challenge, it must meet the following requirements:

- 1. No HHS or AHRQ logo**—They must not use HHS' or AHRQ's logos or official seals and must not claim endorsement.
- 2. Functionality & Accuracy**—An application may be disqualified if it fails to function as expressed in the description provided by the participant, or if it provides inaccurate or incomplete information.
- 3. Security**—Submissions must be free of malware. Participant agrees that AHRQ may conduct testing on the application(s) to determine whether malware or other security threats may be present. AHRQ may disqualify the application(s) if, in AHRQ's judgment, the application may damage government or others' equipment or operating environment.

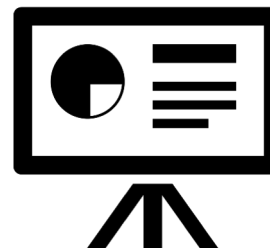
Phase 1: Submission Requirements

Applications should be in English and all documents uploaded in PDF format. You may also optionally include a picture/logo and a company's URL. Both documents should discuss how you will comply with the Health Insurance Portability and Accountability Act (HIPAA) if applicable.



Five Page
Business
Case

+



Briefing
Deck

Submit by **September 24, 2018**, using the online platform:
<https://www.challenge.gov/ahrq-step-up-app-challenge>

For more information, visit: www.ahrq.gov/stepupappchallenge/phase_1

Phase 1: Proposal Business Case

Executive Summary

Proposed Methods & Technologies

Business Model

- Describe the specific problem being solved
- Analysis of the existing market and market opportunity
- Describe how the proposed application will solve the problem
- Describe the customers/users

Development Plan & Timeline

- Describe key activities and resources required to build the application
- Plan to make the application readily available to patients. For example, to be used on existing mobile platforms or deployed on a public-facing website

Metrics of Success

- Define metrics for success (e.g., number of users of the application, money saved by using the application, time saved, increases in patient-reported outcome data exchanges between patients and providers)

Risks & Mitigation Strategies

- Show potential risks and mitigation strategies, including security constraints

Team Capabilities & Responsibilities

- A multi-disciplinary team is highly recommended

5

Pages Max

Phase 1: Briefing Deck

Briefly describe the **proposed approach** and how the participant will develop an application using the FHIR technical specifications and PROMIS® physical functioning measures provided by AHRQ

Explain the **competitive advantage** of the approach:

- Innovative and does not infringe on in-market solutions
- Includes an advanced application technology that has the potential to improve the collection and use of PRO data
- Designed for patient engagement

Give an example **use case**

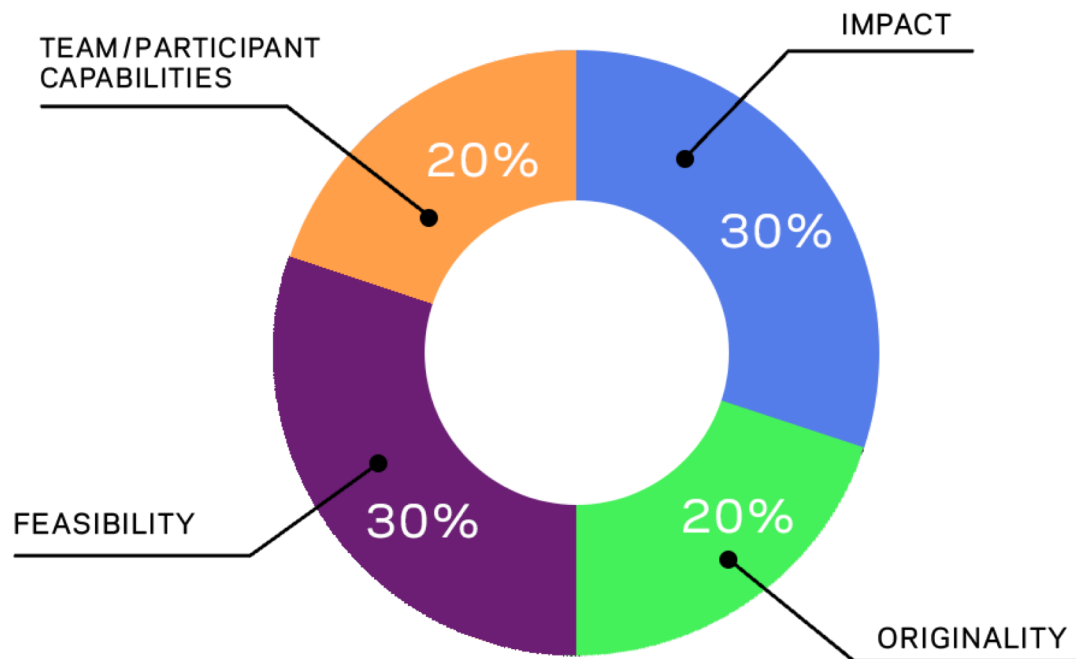
Show proposed **development workflow** and deliverables

An **architecture diagram** or framework

10

Slides Max

Phase 1: Evaluation Criteria



Phase 1: Evaluation Criteria

Team/Participant Capabilities (20%)

There is appropriate expertise and capability to bring the idea to the development stage.

The team and/or participant has the resources available to carry out the proposed work.

A multi-disciplinary team is highly recommended.

Phase 1: Evaluation Criteria

Impact (30%)

The proposed solution has the potential to improve the state of PRO collection, aggregation, and reporting.

The proposed solution describes a clear value proposition to users.

There is a clear plan to make the proposed solution readily available to patients and providers on existing mobile platforms or customer-facing websites.

Phase 1: Evaluation Criteria

Feasibility (30%)

The proposed solution demonstrate a reasonable and credible approach to accomplish the proposed objectives, tasks, outcomes, and deliverables.

The proposed solution addresses a reasonable pathway or timeline to application development.

The proposed solution clearly defines potential risks and mitigation strategies including security constraints.

The proposed solution includes an architecture diagram or framework that is feasible and executable for deployment.

Phase 1: Evaluation Criteria

Originality (20%)

The proposed solution is innovative and does not infringe on in-market solutions.

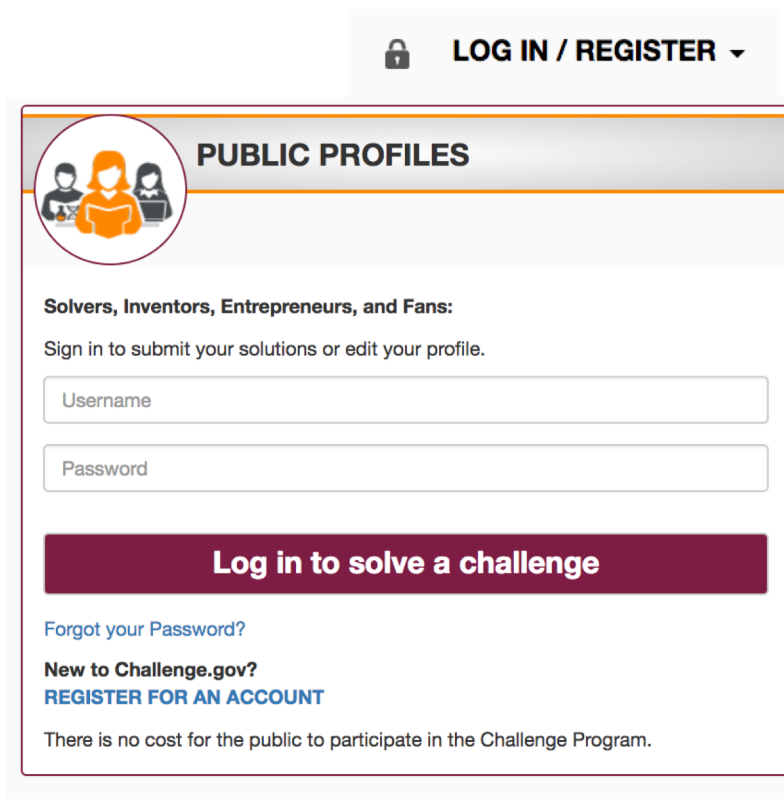
The proposed solution includes an advanced application technology that has the potential to improve the collection and use of PRO data.

The proposed solution is designed for patient engagement

How to Enter

To apply, visit: www.challenge.gov/ahrq-step-up-app-challenge

- 1) Create a challenge.gov account by clicking "Log In/Register"
- 2) Register for a "Public Profile" account
- 3) Once your challenge.gov profile is created, you will be able to submit your solution on the AHRQ Step Up App Challenge page



The screenshot shows the 'PUBLIC PROFILES' section of the challenge.gov website. At the top right, there is a 'LOG IN / REGISTER' link with a lock icon. Below this, the 'PUBLIC PROFILES' header is accompanied by an icon of three people. The main content area is titled 'Solvers, Inventors, Entrepreneurs, and Fans:' and includes the instruction 'Sign in to submit your solutions or edit your profile.' There are two input fields: 'Username' and 'Password'. A prominent purple button labeled 'Log in to solve a challenge' is positioned below the fields. Further down, there are links for 'Forgot your Password?' and 'New to Challenge.gov? REGISTER FOR AN ACCOUNT'. A footer note states: 'There is no cost for the public to participate in the Challenge Program.'



AHRQ Step Up App Challenge

Advancing Care Through
Patient Self-Assessments

Q & A

For more information, visit:

www.ahrq.gov/stepupappchallenge

Have additional questions? Contact:

stepupappchallenge@sensisagency.com